

Outcome & Indicator

Baseline & the story behind it

Current Situation

What can be done better?

**Proposed Outcome:** Reduce levels of crime and the impact of crime for the benefit of the community.

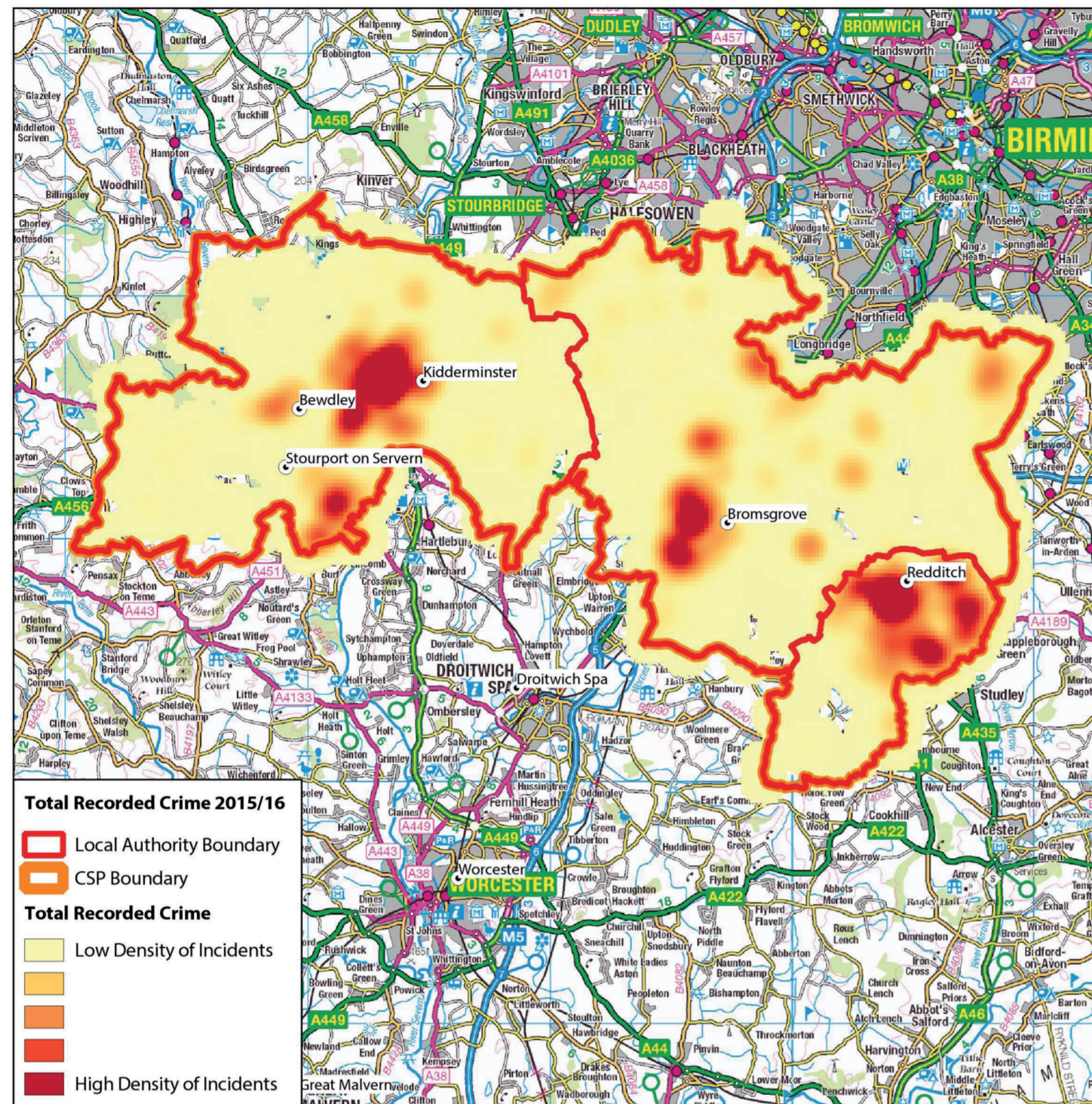
**Police & Crime Plan :** To understand crime and the cause of crime.

**Alliance Control Strategy Priorities:**

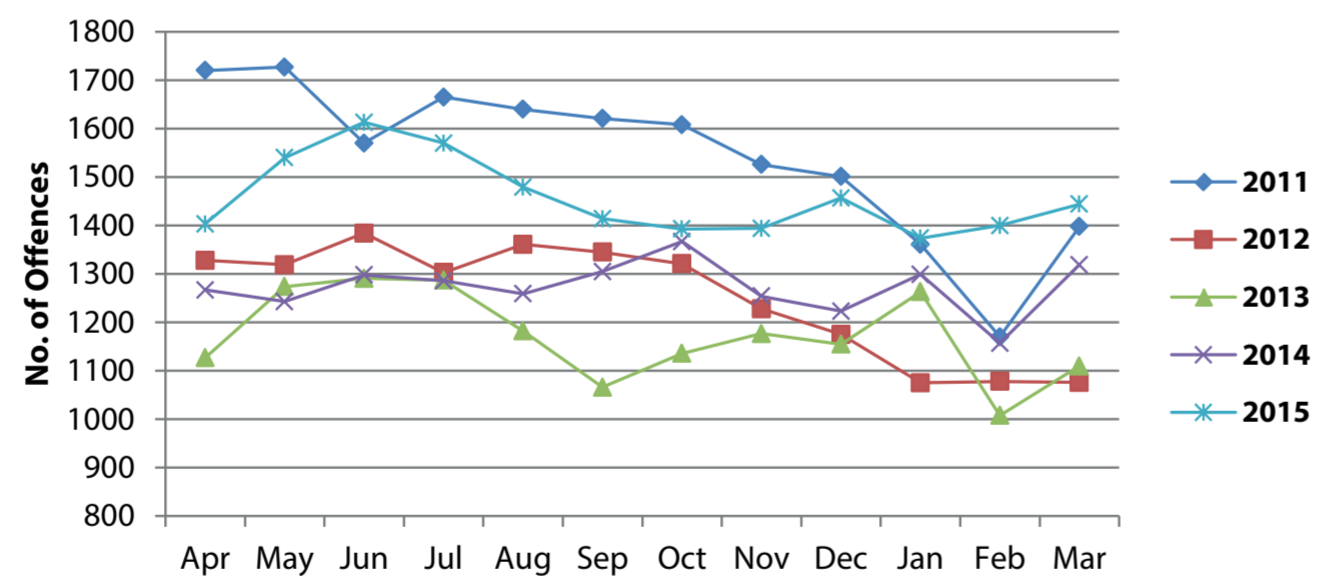
- Strategic Policing Requirement
- Terrorism
- Serious and Organised Crime
- Cyber Crime
- Threats to Public Order
- Civil Emergencies
- Child Sexual Exploitation
- Alliance Priorities
- Cyber Crime
- Child Sexual Exploitation
- Organised Crime Groups
- Rape and Sexual Assault
- Domestic Abuse
- Killed and Seriously Injured RTC's
- Alliance Intelligence Requirement
- Modern Slavery and Human Trafficking
- Female Genital Mutilation
- Serious Acquisitive Crime
- Violent Crime
- Pipeline Incursions

**Key Indicators:**

- Total Recorded Crime
- Key Markers
- Geographical Profiles
- Harm Caused
- CSP Identified Priorities



Total Recorded Crime



	TRC	Trend
2011/12	18,507	→
2012/13	14,993	↓
2013/14	14,076	↓
2014/15	15,277	↑
2015/16	17,481	↑
2016/17	1,278	↓

**Data Sources**

- West Mercia Police Performance Unit Crime by Line 2010 - 2015
- West Mercia Police Performance Unit Dashboard

**Story behind the baseline**

- Total recorded crime was reduced by 17% in the period between 2011/12 and 2013/14.
- However, there has been a 14% increase in TRC between 2014/15 and 2015/16.
- Changes to ethical reporting will have had a level of impact on total recorded crime.
- Assault (with or without injury) makes up 29% of the total recorded crime in North Worcestershire (2015/16) and has seen a 54% year on year increase.

**Implications**

- Fear of and perception of crime can impact on social cohesion and communities.
- Home Office Research found total cost of crime against individuals and households was £36,166 million in 2003/04<sup>1</sup>.
- Increase in reported crime coming at a time of reduced resources.
- Community / decision makers not understanding impact of reporting changes on crime levels.

<sup>1</sup> The Economic and Social Costs of Crime Against Individuals and Households 2003/04

**Partners**

- Police and Crime Commissioner
- West Mercia Police
- Safer Bromsgrove
- Safer Wyre Forest
- Safer Redditch
- Clinical Commissioning Group
- Hereford and Worcester Fire and Rescue Service
- Warwickshire and West Mercia Community Rehabilitation Company
- National Probation Service
- West Mercia Youth Offending Service

**Example Projects / Services**

- Community Ambassadors
- CCTV
- Home Security Scheme

**Identified Risks**

- Cuts will reduce the Council's ability to drive the Community Safety Partnership.
- Potential reduction in Local Authority funding.
- Impact of changing and growing population.
- Delays whilst waiting for Worcestershire and West Mercia approaches to be agreed / decided.
- Two tier authority a challenge – what is the role of Worcestershire if they don't have the money.

**Gap Analysis**

- Community consultation to address fears and perceptions of crime.
- Meaningful evaluation of the impact in changes in reporting.
- Intelligence and analysis to further understand causes of changes to crime profile.

**Police and Crime Plan Outcomes**

- To reduce the volume of violent crime with an emphasis of addressing the harm caused by alcohol through partnership working.
- To reduce the volume of anti-social behaviour incidents.
- To reduce re-offending and bring offenders to account.
- To develop and implement a business crime strategy.
- To work in partnership to protect the most vulnerable people in our society.
- To deliver a supportive and effective response to victims and witnesses.
- To work with the Safer Roads Partnership to reduce the number of casualties on our roads.
- To meet the requirements of the Strategic Policing Requirement.
- To reduce the harm caused by drugs with a focus on treatment, and targeting those that cause the most harm.

**Outcome Star/s:**

- Community Star;
- Drug and Alcohol Star;
- Empowerment Star;
- Family Star, Family Star (Early Years) and Family Star Plus;